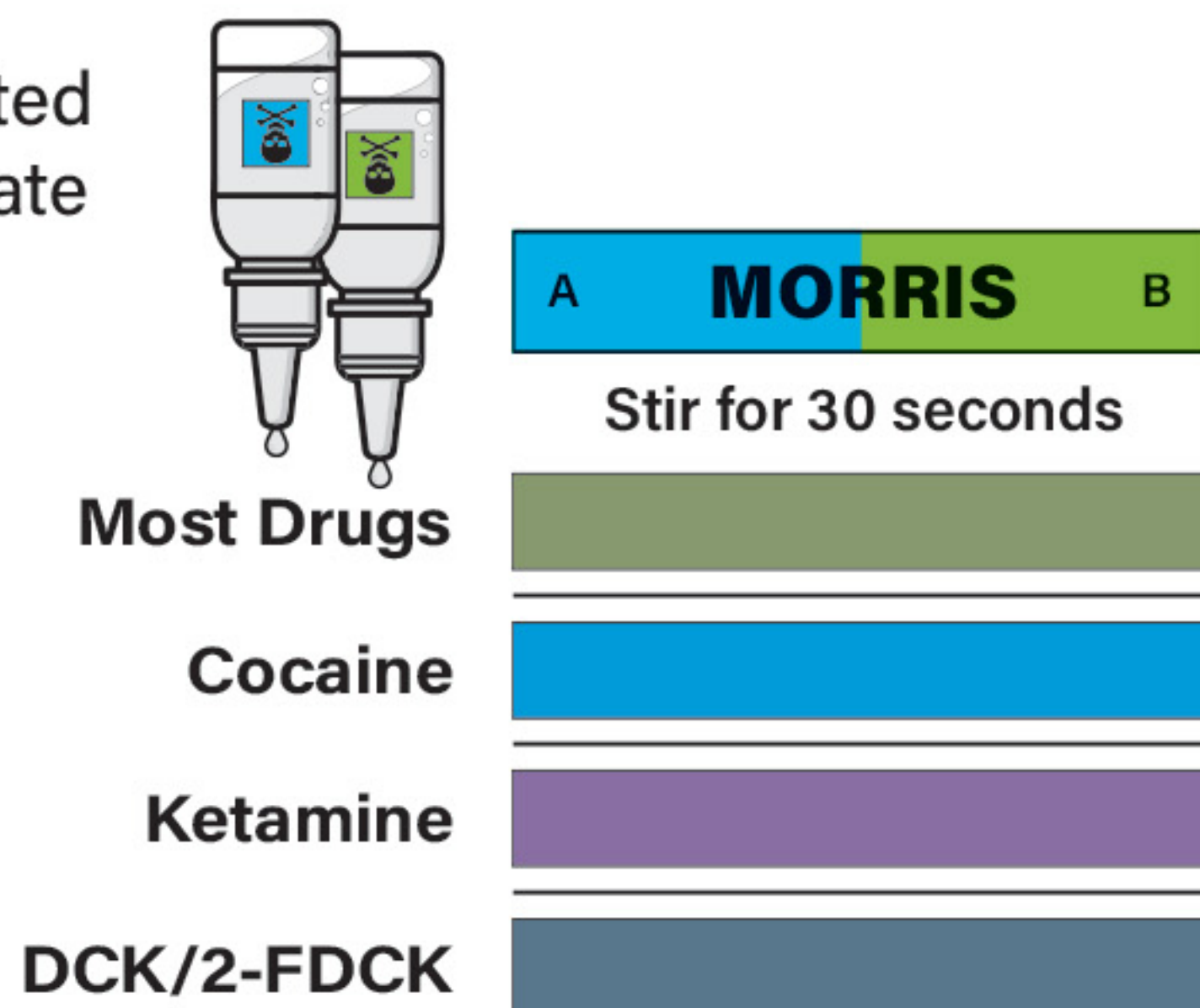


HOW TO TEST COCAINE & KETAMINE



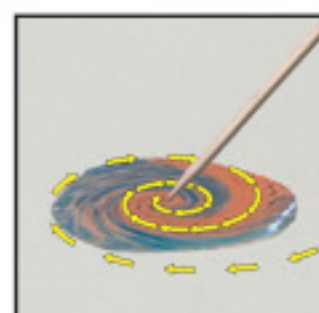
- 1 Place a pinhead size** amount of your suspected cocaine or ketamine onto a white, ceramic plate (a bit more than a tiny speck).
- 2 Use Morris reagent.** Place one drop from each bottle (A then B) onto the sample. Most substances will turn a bluish color after the first drop.
- 3 Stir the mixture** with a toothpick or the sharp point of a knife for a full 30 seconds to achieve the final color reaction.



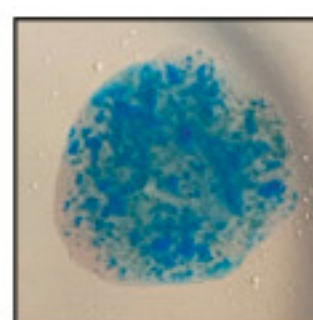
NOTE: Morris reagent is the only reagent you need to identify cocaine or ketamine. Some test kit vendors may try to sell you other reagents, but they aren't necessary and often produce conflicting results. To date no other drug has been discovered that turns purple with Morris except ketamine, and nothing else turns the same vibrant "blue raspberry candy" color except cocaine.



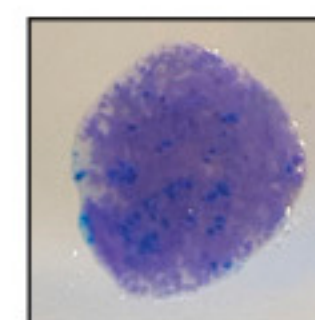
Most drugs produce blue specks after the first drop.



Stir for 30 seconds before assessing the final color.



Cocaine turns "blue raspberry candy" color.



Ketamine turns purple.